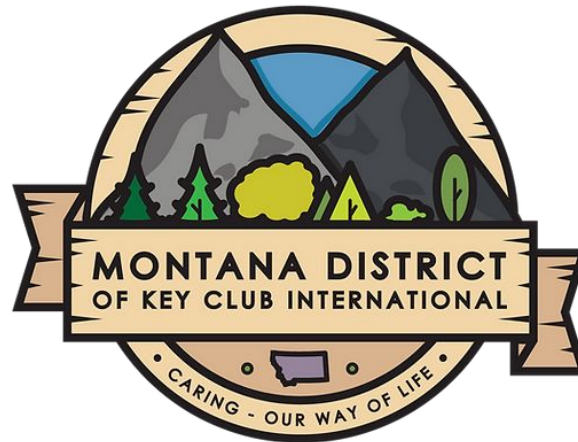




MT District Key Club



Michelle Preston & Valerie Pachl

KEY CLUB®

State of the District

- **39 MT Key Clubs**
 - Active Status: 27
 - Inactive Status: 5
 - ◆ Beaverhead, Billings Senior, Butte Central, GF Central, Hardin
 - Suspended Status: 7
 - ◆ Anaconda, Columbia Falls, Gallatin High, Hamilton, Lincoln County, Sentinel, Sidney

- **Welcome NEW clubs:**
 - Butte High
 - East Helena High

Reactivation

1. The Kiwanis sponsor of record must complete, in its entirety, page two of this petition. In the case of a co-sponsor, the second Kiwanis sponsor of record must complete and attach a separate copy of page two.
2. The school administration must complete page three of this petition. Only one Key Club charter is allowed per school.
3. The member leaders, duly elected by the Key Club members, must complete the Acceptance of Leadership form
4. The accompanying membership information form must be completed, listing all reactivating charter members by name, and providing accompanying membership information for each. Use additional sheets as necessary. (Note: Kiwanis International maintains these names and information for organizational use only. At no time will Kiwanis International provide membership list to outside organizations.)
5. Mail Reactivation Petition, sponsor agreement, leadership acceptance and member roster with the reactivation fee. The following fees must be included in your petition to reactivate:

Reactivation Fee: \$100.00

International Member Dues: \$7.00/per person

District Dues- \$6.50

6. Mail: Kiwanis International, ATTN: Service Leadership Programs Chartering, 3636 Woodview Trace, Indianapolis, Indiana 46268, USA. Contact Kiwanis International with any questions at 1-800-KIWANIS, Ext. 411 or slpcharter@kiwanis.org.

[Reactivation Form Link](#)

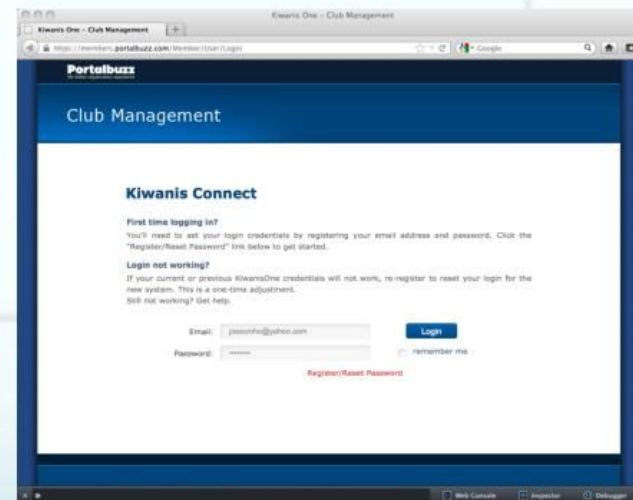


Membership Update Center

<https://members.portalbuzz.com/>

Log in with your email address and password that are on file with Key Club International.

Problems?
Call 1-800-KIWANIS x411
For Key Club International to speak to a representative.



KEY CLUB®

Advisor Background Checks

Kiwanis SLP advisors

Whoever is reported as a designated Kiwanis advisor to any sponsored Service Leadership Program (SLP) club. Kiwanis International's SLPs are K-Kids, Builders Club, Key Club, Circle K International and Aktion Club.

Faculty/facility advisors:

If a faculty advisor only works with students on school premises for meetings and events, a school background check is sufficient.

Faculty advisors will be required to have an approved background check through the Kiwanis vendor for overnight stays and SLP sponsored events off school premises. They will be required to take our chaperone training via Praesidium Inc. and annually review our Youth Protection Policies

Chaperones:

A chaperone is defined as a Kiwanis member, faculty member, parent, legal guardian or person who is in loco parentis, 21 years of age or older, who has been approved by the school or agency and registered with the school or agency to accompany youth members at a specific event.

KEY CLUB[®]

Sponsorship Opportunities

How are we funded?

- Member Dues
- Fundraising
- Registrations for events
- Scholarship/Donation

MT District Key Club Sponsorship Form

- Platinum Level: \$500
- Gold Level: \$400
- Silver Level: \$300
- Bronze Level: \$200
- Trophy Level: \$350



KEY CLUB®

DCON Information



March 20-22, 2022

Billings Hotel & Convention Center

“Changing the world with Service”



Registration @ mtkeyclub.org

KEY CLUB®

District Board Candidates

Currently, I **have** candidates for the following offices:

- Governor (2 candidates)
- District Secretary
- Bulletin Editor
- Tech master
- LTG Division 5
- LTG Division 7
- LTG Division 9 (2 candidates)

The following district positions are **vacant** and currently **without** candidates: ([here's a link to candidate form!](#))

- LTG Division 1
- LTG Division 3
- LTG Division 4
- LTG Division 6
- LTG Division 8



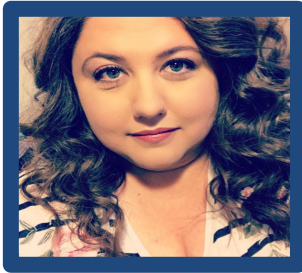
**Check out the website
and stay informed!**



mtkeyclub.org



Michelle Preston



(406) 870-1959

michelle_preston@gfps.k12.mt.us

Co-District Administrator

Valerie Pachl



(406) 951-1869

vpachl@milescity.k12.mt.us

Co-District Administrator



Kiwanis[®]
Service Leadership Programs